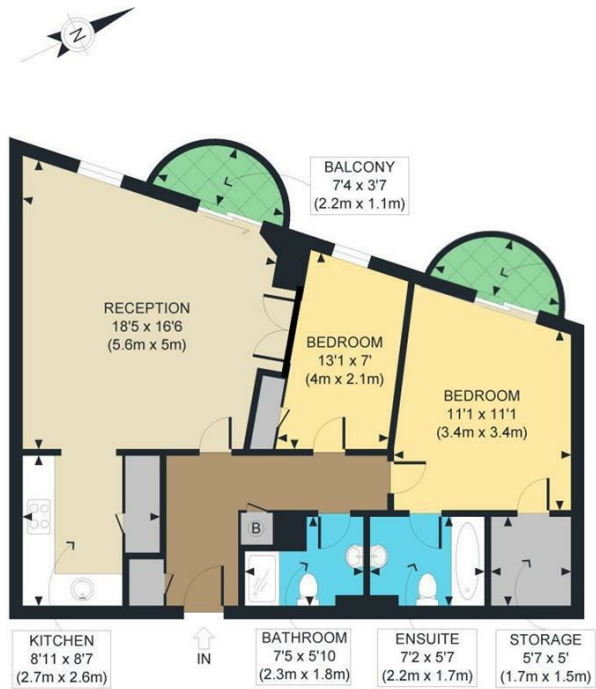


FLAT 109, 4, CASCADES TOWER WESTFERRY ROAD
LONDON, E14 8JL

£520,000
LEASEHOLD - SHARE OF FREEHOLD

Trotters Estates are pleased to offer this beautiful 2 bed, 2 bath apartment, located in Canary Wharf, E14

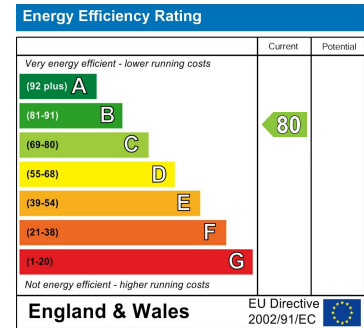




GROSS INTERNAL FLOOR AREA 777 SQ FT

APPROX. GROSS INTERNAL FLOOR AREA 777 SQ FT / 72 SQM

Disclaimer: Floor plan measurements are approximate and are for illustrative purposes only. While we do not doubt the floor plan accuracy and completeness, you or your advisors should conduct a careful, independent investigation of the property in respect of monetary valuation



Agents Note: Whilst every care has been taken to prepare these particulars, they are for guidance purposes only. All measurements are approximate and are for general guidance purposes only and whilst every care has been taken to ensure their accuracy, they should not be relied upon and potential buyers/tenants are advised to recheck the measurements

Trotters Estates
Unit 3 Cascades, Westferry Road
Canary Wharf
London, England
E14 8JT

0204 531 6555
enquiries@trottersstates.co.uk
trottersstates.co.uk

